

FOREVER[®] 
DIGITAL TRANSFER APPLICATIONS TECHNOLOGY

DTF TRANSFER FILM

MORE THAN JUST A RELEASE FILM

MADE IN
GERMANY

DTF TRANSFER FILM

An all-in-one cost-effective solution for the DTF printing system.

By choosing FOREVER's DTF Transfer Films, you are not only investing in yet another quality German product, but in confidence - confidence in the knowledge that your transfers will be consistently great, fast, reliable, cost-effective, brighter and offer the highest washability.

MATERIALS

- Cotton
- Polyester
- Nylon
- Leather
- Mixed Fabrics

APPLICATIONS

- T-Shirts
- Polos
- Hoodies
- Laptop Bags
- Leather Bags
- Travel Bags
- Hats
- Caps
- Shoes
- Jute Bags



**CONSISTENT
QUALITY**

**HIGH
WASHABILITY**



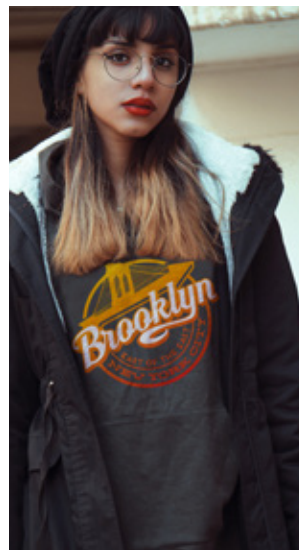
ADVANTAGES



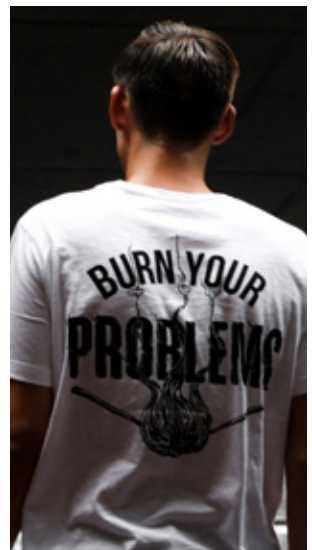
**INSTANT /
HOT PEEL**



**GLITTER OR MATT
FINISH**



**VIBRANT
COLORS**



**LIGHT & DARK
TEXTILES**

WHY FOREVER DTF?

Developed & produced in Germany. With the FOREVER DTF Transfer Films, you will be printing no-cut designs that have the finest details & the brightest colors. Peeling instantly or hot with either a Matt or a Glitter finish. Low press temperatures of 120-150°C/248-302°F keep productions flowing. A protective coating in the film helps fuse the inks to the garment.





MASS PRODUCTION

DTF mass production with 1-second transfers & instant peel. Cut costs & boost efficiency.



QUICK DRYING

Quick-drying times with Kodak, Mimaki, DuPont, Epson, STS & more DTF inks - vibrant results, no waiting.



LESS DYE MIGRATION

Our DTF formula minimalizes dye migration, preserves colors better, eliminates the need for different glues - enhancing cost-effectiveness.



DTF PREMIUM MATT



This transfer film is really flexible and can work quickly - in 1 to 15 seconds. It makes colors look great, dries fast, and is peeled instantly. It's great with different kinds of DTF inks like Kodak, DuPont, Mimaki, Epson, STS, and others. Using this film will impress your customers and help you do better than your competitors.

CHARACTERISTICS

- Instant Peel (Unique)
- Protective Coating for Higher Washability
- Matt Finish
- Soft Touch



DTF GLITTER

Attract your customers with shiny and colorful glitter designs. A special shiny finish makes your brand unique and more attractive. Choose to be efficient, colorful, and improve your business. Works well with DTF inks from brands like Kodak, DuPont, Mimaki, Epson, STS, and others.

CHARACTERISTICS

- Soft Touch
- Hot Peel
- Glitter Finish
- Complex Designs

FORMAT



- 30cm x 100m/11.8" x 328ft
- 30cm x 10m/11.8" x 32.8ft (Sample Roll)
- 45cm x 100m/17.7" x 328ft (O/R)
- 60cm x 100m/23.6" x 328ft
- 60cm x 10m/23.6" x 32.8ft (Sample Roll)
- 81cm x 100m/31.8" x 328ft
- 120cm x 100m/47.2" x 328ft
- 30cm x 50m/11.8" x 164ft (Glitter)
- 45cm x 50m/17.7" x 164ft (Glitter)
- 60cm x 50m/23.6" x 164ft (Glitter)
- 81cm x 50m/31.8" x 164ft (Glitter)
- 120cm x 50m/47.2" x 164ft (Glitter)
- 25cm x 30cm/9.8" x 11.8" (O/R)
- 40cm x 50cm/15.7" x 19.6"
- DIN A3/11.69" x 16.53"
- DIN A4/8.27" x 11.69"

WHAT IS DTF?

Print on a film and directly transfer onto fabric. DTF is also referred to as Direct-to-Film, and it works by printing transfers on to a film, that are heat pressed to a variety of garments (and other substrates).



LARGE FORMAT

The DTF large format printing system produces hundreds of graphics or designs onto large rolls of film. It requires the use of specialist equipment, and much larger printers than the standard DTF printing system.

ADVANTAGES

- Reliability & high production
- Low-cost production
- Large production volumes
- Less servicing
- Less film waste
- All-in-one system
- Inline printing, powdering & drying

SETUP



FOREVER DTF
Transfer Film (Rolls)



DTF Printer
(Medium/Large Format)



DTF Shaker, Dryer & Roller
(Medium/Large Format)



INSTA 256 FOREVER Edition
Professional Heat Press

SMALL FORMAT

The smaller DTF printing system is perfect for start-ups or even for companies wanted to make a smaller investment in the DTF system. The production volumes are lower than the large format printing system. This system is suited for Print-on-Demand.

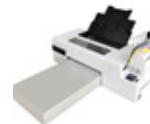
ADVANTAGES

- Affordable
- Compact Design
- Minimum space requirement

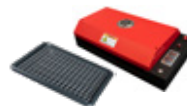
SETUP



FOREVER DTF
Transfer Film (Sheets)



DTF/DTF Modified Printer
(Small Format)



DTF Powder Tray
& Drying Oven

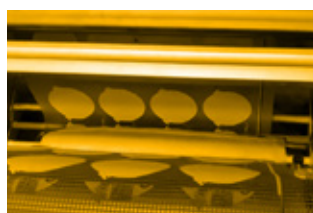


INSTA 256 FOREVER Edition
Professional Heat Press

HOW DOES IT WORK?



Print Design on Film using a RIP
Software



Apply Glue/Powder to wet Ink



Cure in a Dryer



Press to Garment

